

## Setting up a NVR with IP Cameras

### Getting the camera information

Your first action will be to power the camera up (12v) and connect it to the Local area network (LAN). Once this is done, you will need to obtain the IP addresses of the camera.

Defaults are as follows:

<b>CAM 0198/IP1.3:</b>	192.168.1.88
<b>CAM 0198/IP2.0:</b>	192.168.1.88
<b>CAM 083/IP2.0:</b>	192.168.1.66
<b>CAM 083/IP2.0:</b>	192.168.1.66

Connect to the camera using a PC in the same range of the IP cameras, using Internet Explorer. This is done by changing the IPv4 address as follows:

### Network & sharing Centre

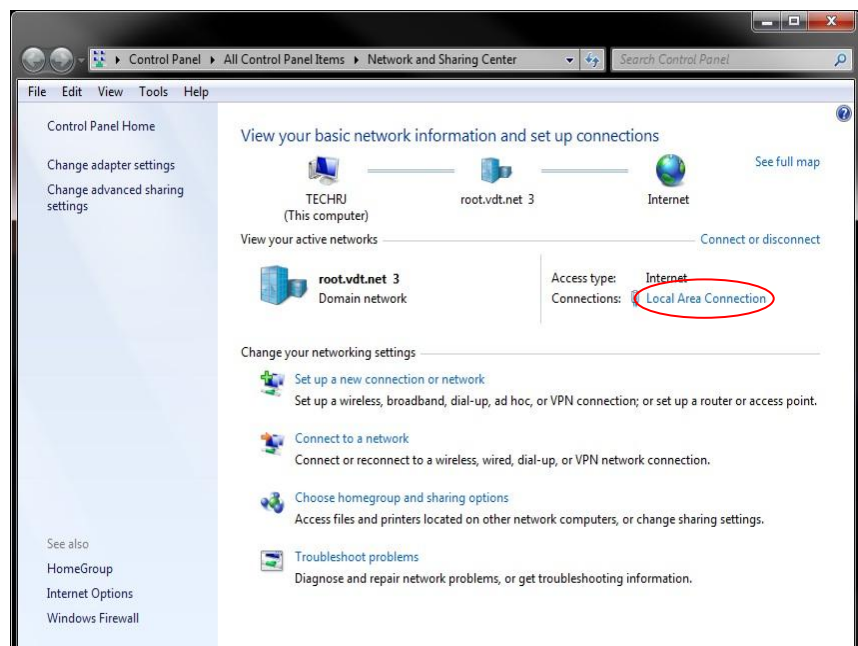
On the windows taskbar, select 'Network and Sharing Centre'.



### Local Area connection

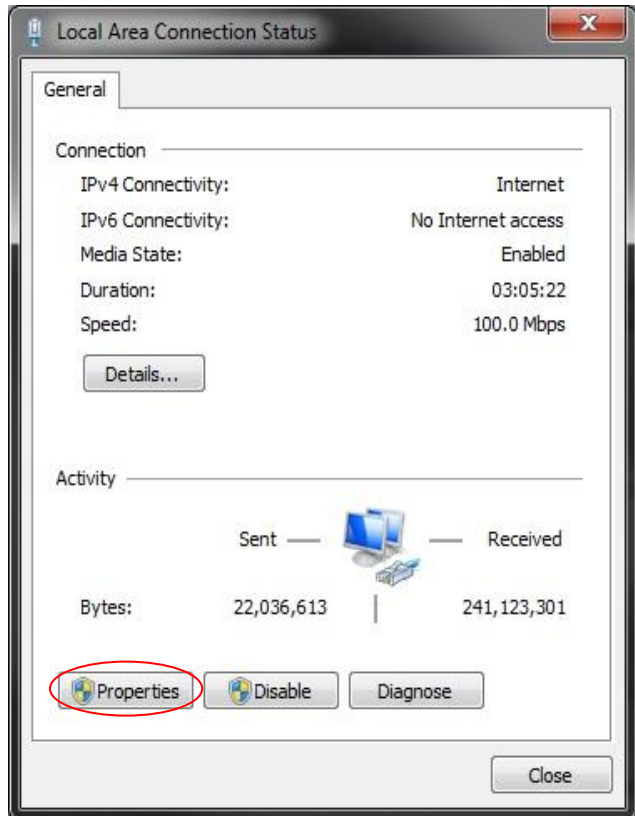
This will open the 'Network and Sharing Centre' window.

Here you will need to click on 'Local Area Connection'.



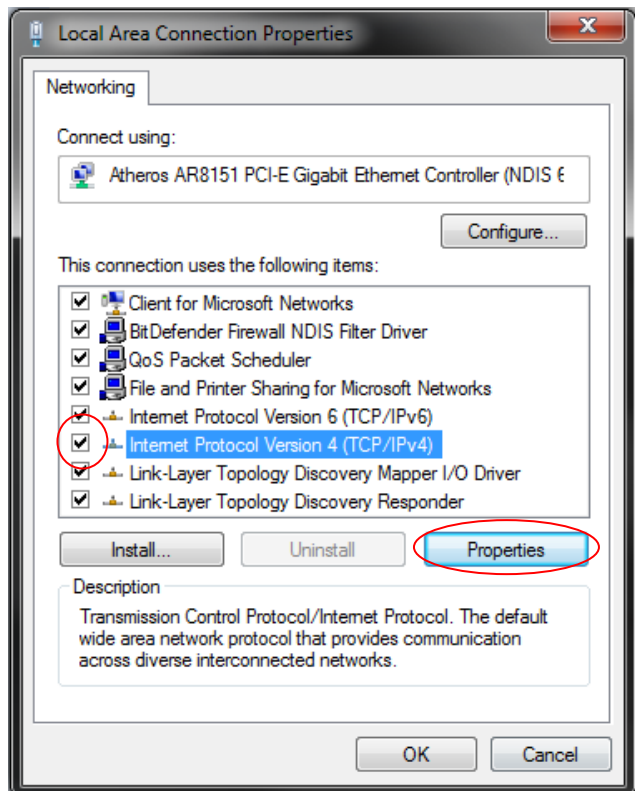
You will now see the window for 'Local Area connection Status'.

Click 'Properties'.



### Amending IP4 Properties

The window for 'Local Area Connection Properties' will be as shown. Here you will need to amend the 'IPv4 Properties'. Ensure this is selected and select 'Properties' to proceed.



## Internet Protocol Version 4 (TCP/IPv4) Properties

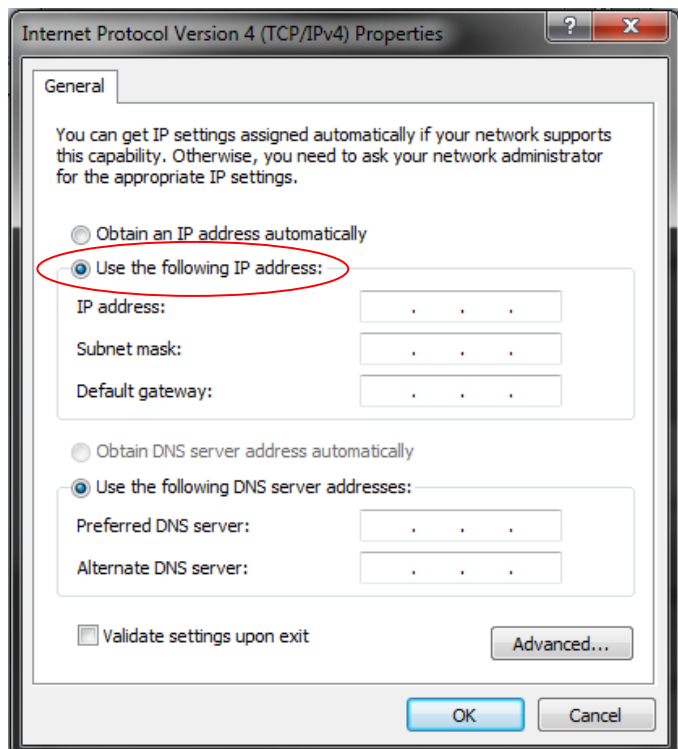
Ensuring 'Use the following IP address' is selected, amend the IP address to one which is within range of the camera.

For example, if the IP of the camera is currently 192.168.1.88, you could set the IP address to 192.168.1.80 to sit within range.

The 'Subnet mask' will be automatically generated.

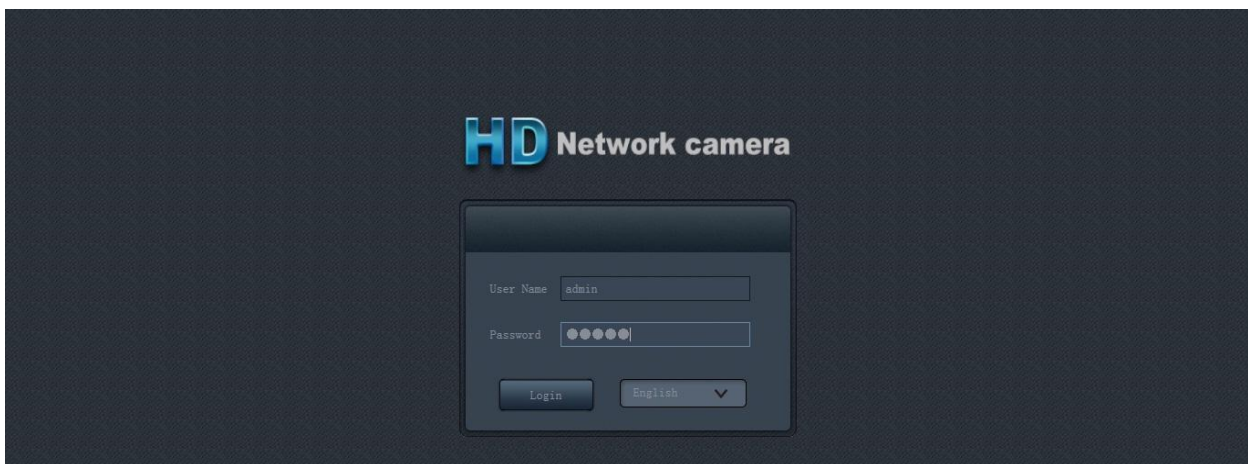
When this has been changed then select 'OK' and 'Internet Protocol Version 4 (TCP/IPv4) Properties' will close.

Now close the Local Area Connection Properties, this will then save the IP addresses entered.



## Logging onto camera using Internet Explorer

Once this has saved then log onto internet explorer and type in the IP address of the camera into the search bar. Default IP addresses are at the beginning of this document.



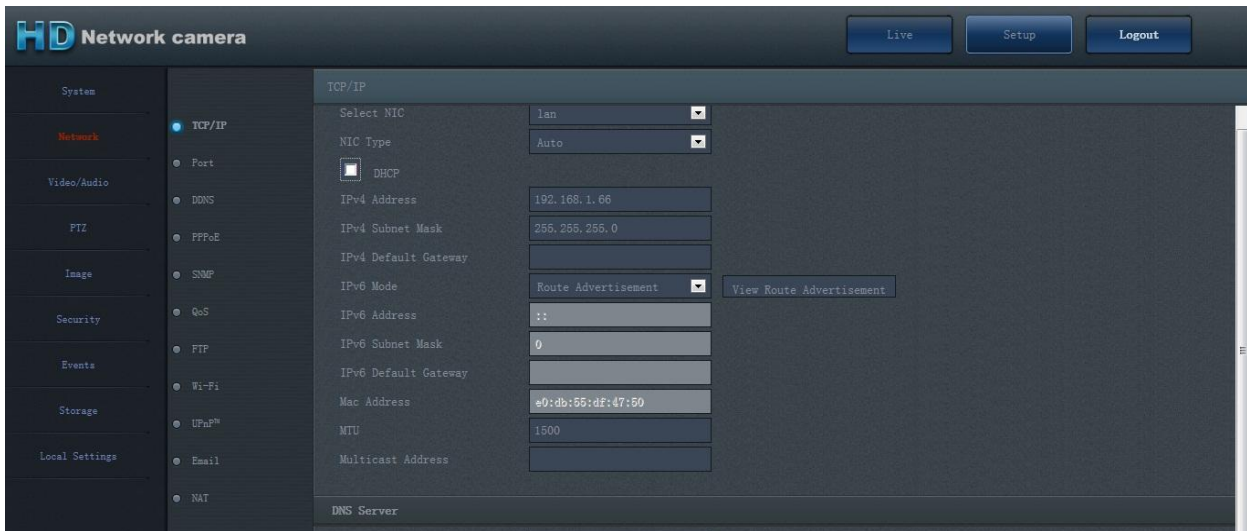
To log on to the camera once on this screen the details needed are **USERNAME:** admin, **PASSWORD:** admin, select Login.

The screen displayed will be the live feed of the camera, if this is not displayed then refer to **6. Installing active controls for IP camera connection.**

Select the 'Setup' icon and this will display the setup where 'Network' needs selecting. In this section 'DHCP' can be enabled or a free IP address can be configured in this area (see, 'Getting a free IP address on the network' for more information on IP addresses)

Once this is done save the settings and the unit will reboot.

Close Internet Explorer and then log onto the NVR.



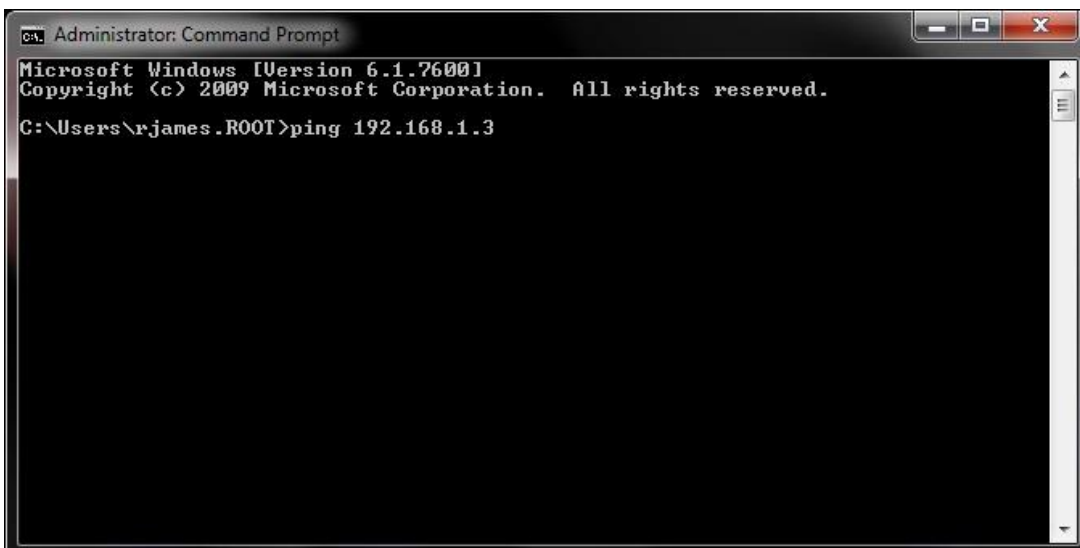
## Getting a free IP address on the network

You will need to connect to the camera and change the IP address to match your LAN address. E.G: **LAN IP:** 192.168.1.1 IP, **NVR IP:** 192.168.1.2.

The camera IP will need to be 192.168.1.\*.

This will need to be a free IP address on the network. This means nothing on the network that is already using the IP address required. This can be found by a network engineer or by setting a ping up as follows:

1. Go to the windows "start menu".
2. Type in the search bar "CMD".
3. Select program "CMD".
4. Then type in "ping 192.168.1.3 -t" (please see Fig 1) this is an example.
5. Press "Enter".
6. Once "Enter" is pressed, the program will either reply or time out.
7. If you get a reply then it means that something is already connected to that IP Address.
8. If you get a time out the IP will be free on the network.
9. To stop this press "Ctrl & C".
10. Close the CMD window.



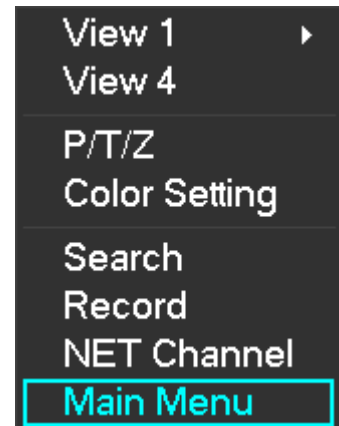
## Setting up an IP camera on the NVR

There are a number of things that need to be done within the menu of the NVR to make sure the NVR is on the network and the IP Cameras are in communication with the NVR.

To get the NVR on the network, plug the unit into the network via Ethernet and use the free IP address obtained previously. e.g.192.168.1.3.

## Logging onto NVR

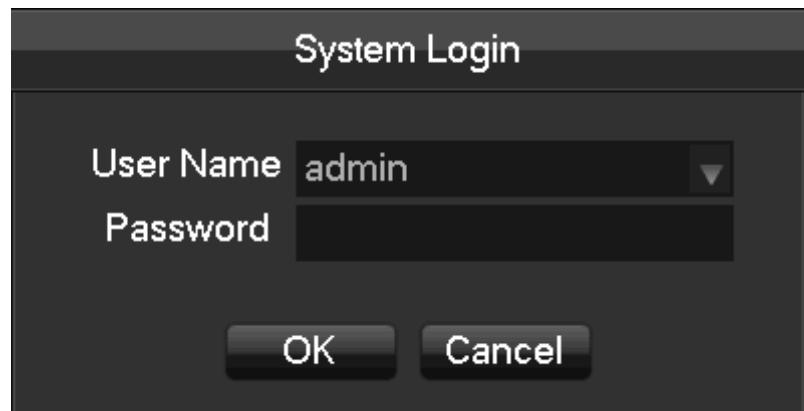
Log onto the main menu by right clicking on the mouse. select the 'Main Menu'.



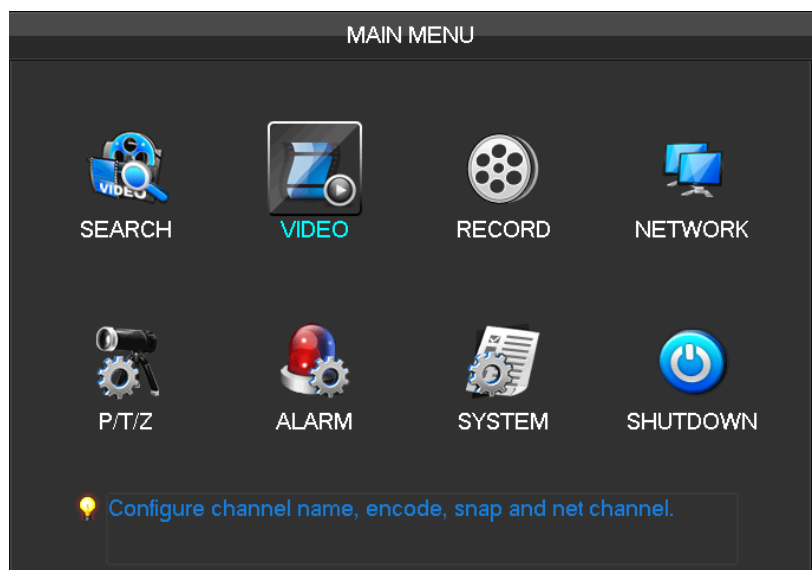
Login using the following,

**USERNAME:** admin

**PASSWORD:** 123456



Once Logged onto the 'MAIN MENU', select "VIDEO"



## Searching for camera

Within this menu you will find "NETCHANNEL".

Select "SEARCH"

The screenshot shows the 'VIDEO' configuration window with the 'Net Channel' tab selected. The fields are as follows:

Channels	1 - NET	<input checked="" type="checkbox"/> OPEN	Search
Protocol Type	TYPE 1		
Remote IP	192.168.254.167		
Port	8008		
UserName	admin		
Password	••••••		
Remote Detect	Detect		
Remote Channel	1		

Buttons at the bottom: Copy, Default, OK, Cancel, App.

The protocol may need changing. This is the drop down menu next to 'Search'.

As default the protocol is type 1

Select the Camera that needs adding onto the NVR. The Address can be modified, however if double clicked the camera detail will automatically save in the NVR settings, excluding the password.

As default the camera password is: 123456.

Then select "App" Then "OK" the camera will then be saved and displayed.

The screenshot shows the 'Search Device' window with a table of detected devices. A red box highlights the table content.

	IP	Port	Protocol	Device Type
6	192.168.254.46	9000	TYPE 1	ZL_DVR_7108E
1	192.168.254.55	8000	TYPE 1	ZL_DVR_6104
2	192.168.254.150	8000	TYPE 1	IC202G
3	192.168.254.151	8000	TYPE 1	IPC_3516_1080p
4	192.168.254.152	8000	TYPE 1	IC202G
5	192.168.254.244	9000	TYPE 1	ZL_DVR_7116E
6				

Buttons at the bottom: Modify Address, TYPE 1 (dropdown), Search